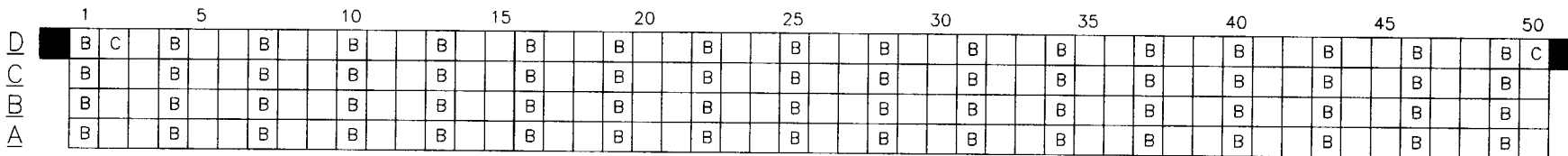


Tous droits strictement reserves. Reproduction ou communication a des tiers interdite sous quelque forme que ce soit sans autorisation écrite du propriétaire. Propriete de c FCI. Droits de reproduction FCI.

All rights strictly reserved. Reproduction or issue to third parties in any form whatever is not permitted without written authority from the proprietor. Property of FCI. Copyright FCI.

ITEM KEY	SIGNAL DATA				
	SIZE 4 x 50	TOTAL NO. OF POSITIONS - 200	NO. OF POSITIONS LOADED - 200		
	PLATING - 30u"/.76u Au		PRESS FIT STYLE		
	PIN P/N	QTY.	MATING LENGTH	TAIL LENGTH	TOTAL PIN LENGTH
A	94081-1129B	130	.230 / 5.84	.177 / 4.50	.595 / 15.11
B	94081-1128B	68	.270 / 6.86	.177 / 4.50	.634 / 16.10
C	94081-1130B	2	.190 / 4.83	.177 / 4.50	.555 / 14.10

HSG P/N: 50792-X200X



PIN 1

- ALL POSITIONS ARE LOADED WITH "A", EXCEPT AS SHOWN.
- COLUMN 1, ROW A IS DESIGNATED AS SIGNAL PIN 1, AS VIEWED FROM THE MATING FACE.
- FOR ADDED DIMENSIONAL INFORMATION REFER TO DOCUMENT NUMBER "50009".

mat'l. code				tolerances unless otherwise specified		CUSTOMER COPY	 Electronics www.fciconnect.com
ltr	ecn no	dr	date	.XX ±.01 / xx±0.3			
A	V41239	DHS	8/23/94	linear	.xxx ±.005 / .xx±.13	 INCH/mm	4 ROW VERTICAL HEADER
B	V82253	HTB	12/29/98		.xxxx ±.0020 / .xxx±.051		PRESS FIT, SELECT LOAD, 0 G.P.
C	V00841	LSS	5/15/00	angles	0° ±2°		product family HPC
				enrg	D.SHIELDS 8/23/94	scale	code
				chr	S.CLARK 8/23/94	1:1	213
				oppd	D.SHIELDS 8/23/94		sheet
sheet index	revision sheet	C	1				1 of 1